

OAKS AT BOCA RATON PLAT FOUR

A PLANNED UNIT DEVELOPMENT BEING A PART OF RAINBOW PUD
 BEING A REPLAT OF TRACT A, "OAKS AT BOCA RATON PLAT THREE", AS RECORDED IN PLAT BOOK 99, PAGES 37 THROUGH 39
 OF THE PUBLIC RECORDS OF PALM BEACH COUNTY, FLORIDA,
 LYING IN SECTION 31, TOWNSHIP 46 SOUTH, RANGE 42 EAST, PALM BEACH COUNTY, FLORIDA

THIS INSTRUMENT PREPARED BY
 DAVID P. LINDLEY
 OF
 CAULFIELD and WHEELER, INC.
 SURVEYORS - ENGINEERS - PLANNERS
 7301-A WEST PALMETTO PARK ROAD, SUITE 100A
 BOCA RATON, FLORIDA 33433 - (561)392-1991
 DECEMBER - 2002

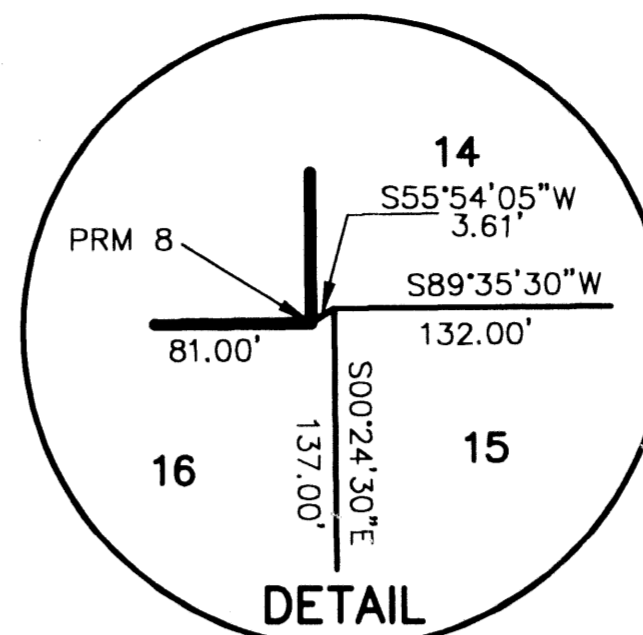
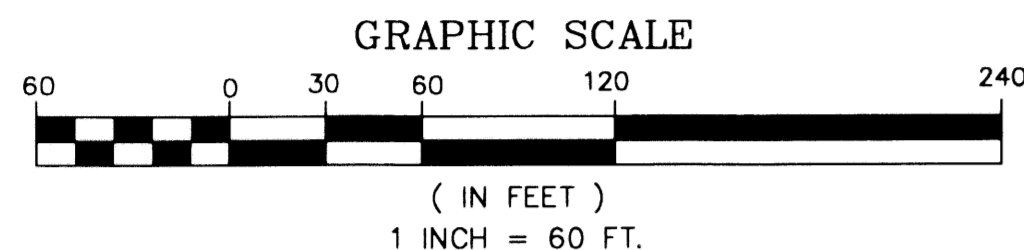
NOTES COORDINATES, BEARINGS AND DISTANCES

COORDINATES SHOWN ARE GRID
 DATUM = NAD 83 1990 ADJUSTMENT
 ZONE = FLORIDA EAST
 LINEAR UNIT = US SURVEY FEET
 COORDINATE SYSTEM 1983 STATE PLANE
 TRANSVERSE MERCATOR PROJECTION
 ALL DISTANCES ARE GROUND
 SCALE FACTOR = 1.00002099
 GROUND DISTANCE X SCALE FACTOR = GRID DISTANCE
 BEARINGS AS SHOWN HEREON ARE GRID DATUM, NAD 83 1990
 ADJUSTMENT, FLORIDA EAST ZONE.

STATE OF FLORIDA
 COUNTY OF PALM BEACH
 THIS PLAT WAS FILED FOR
 RECORD AT _____ M.
 THIS _____ DAY OF _____
 A.D. 2003 AND DULY RECORDED
 IN PLAT BOOK _____ ON
 PAGES _____ AND _____
 DOROTHY H. WILKEN
 CLERK CIRCUIT COURT

BY: _____
 DEPUTY CLERK

SHEET 2 OF 2

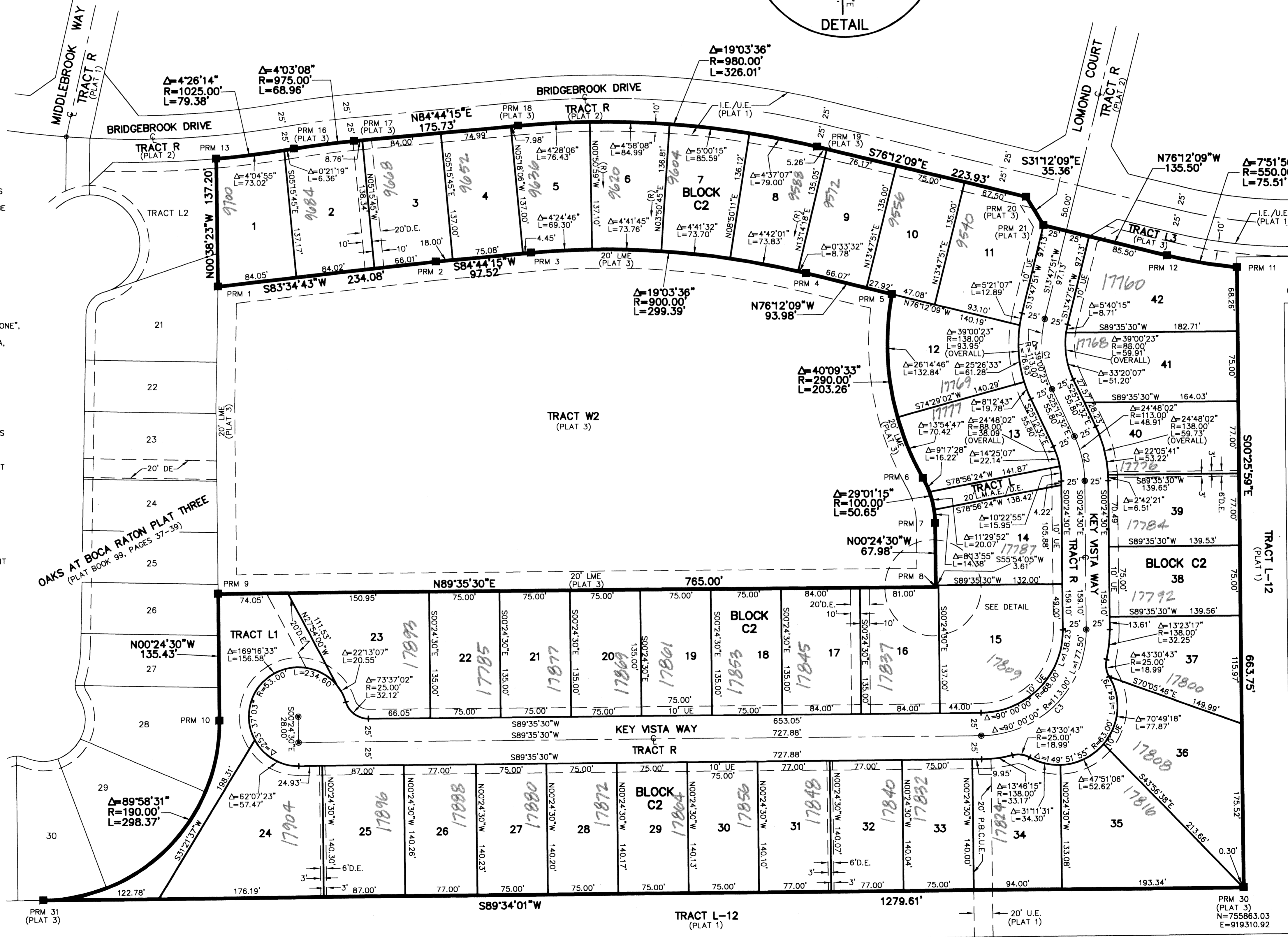


SURVEY NOTES:

- IN THOSE CASES WHERE EASEMENTS OF DIFFERENT TYPES CROSS OR OTHERWISE COINCIDE, DRAINAGE EASEMENTS SHALL HAVE FIRST PRIORITY, UTILITY EASEMENTS SHALL HAVE SECOND PRIORITY, ACCESS EASEMENTS SHALL HAVE THIRD PRIORITY, AND ALL OTHER EASEMENTS SHALL BE SUBORDINATE TO THESE WITH THEIR PRIORITIES BEING DETERMINED BY USE RIGHTS GRANTED.
- BUILDING SETBACK LINES SHALL BE AS REQUIRED BY CURRENT PALM BEACH COUNTY ZONING REGULATIONS. NO BUILDINGS OR ANY KIND OF CONSTRUCTION OR TREES OR SHRUBS SHALL BE PLACED ON AN EASEMENT WITHOUT PRIOR WRITTEN CONSENT OF ALL EASEMENT BENEFICIARIES AND ALL APPLICABLE COUNTY APPROVALS OR PERMITS AS REQUIRED FOR SUCH ENCROACHMENTS.
- APPROVAL OF LANDSCAPING ON UTILITY EASEMENT, (EXCLUDING WATER AND SEWER) SHALL ONLY BE WITH APPROVAL OF ALL UTILITIES OCCUPYING SAID EASEMENT.
- BEARINGS ARE RELATIVE TO THE WEST LINE OF TRACT F, "OAKS AT BOCA RATON PLAT ONE", AS RECORDED IN PLAT BOOK 95, PAGES 16-22, OF THE PUBLIC RECORDS OF PALM BEACH COUNTY, FLORIDA, BEARING N01°27'31\"/>

CURVE TABLE

CURVE NO.	CHORD BEARING	CHORD DISTANCE
C1	S05°42'20\"/>	



TRACT 105, BLOCK 70
 PALM BEACH FARMS COMPANY PLAT NO. 3
 (PLAT BOOK 2, PAGES 45-54)

COORDINATE TABLE

P.R.M.#	NORTHING	EASTING
1	756507.95	918219.98
2	756534.13	918452.60
3	756543.08	918549.71
4	756520.90	918846.91
5	756498.48	918938.18
6	756302.00	918970.53
7	756253.57	918983.43
8	756180.60	918983.92
9	756180.15	918218.92
10	756044.72	918219.89
11	756528.78	919305.91
12	756539.71	919231.57
13	756645.15	918218.45
14	756654.95	918297.20
15	756663.70	918365.58
16	756679.81	918540.57
17	756655.67	918864.19
18	756602.26	919081.66
19	756572.02	919099.97
20	755863.03	919310.92
21	755853.36	918031.32

SUBDIVISION Oaks At Boca Raton Pl 4
 BOOK 99 PAGE 181
 FLOOD ZONE B FLOOD MAP # 215A
 QUAD # 52 ZONING PUD
 SE ZIP CODE 33496
 TAZ 880
 PUD NAME RAINBOW